



1st Five Medical Consultants

The 1st Five Medical Consultants are here to support you in caring for the families you serve.

Colleagues work together to build new skills, share ideas, teach one another, and solve problems.

Medical consultants offer peer coaching and educational presentations to Iowa's 1st Five Sites. There is no cost to providers to participate in these services.

Peer Coaching: Incorporating Screening Tools

The 1st Five Medical Consultants are providers who specialize in implementing evidence-based screening tools into well-child visits.

Peer coaching provides access to colleagues who are routinely doing developmental surveillance and screening in their own clinics and are well-versed in the challenges that implementation can pose to different practices.

They are here to offer support, help address questions and challenges as they arise, and assist with:

- ◆ Workflow
- ◆ Realistic implementation of screening tools into a busy office setting
- ◆ Billing to optimize reimbursement

Educational Presentations

On-site presentations to primary care providers on a variety of topics including:

- ◆ Integrating Developmental Screening into Practice
- ◆ Adverse Childhood Experiences
- ◆ Autism Spectrum Disorder: Information for Primary Care Providers

1st Five webinar series:

- ◆ Learn about:
 - ◆ Developmental Surveillance and Screening in Primary Care Practice
 - ◆ Autism and M-CHAT-R/F in the Primary Care Practice

For more information, please contact your local 1st Five Site Coordinator:

<https://hhs.iowa.gov/sites/default/files/idphfiles/1st-Five-Site-Coordinator-Contact-IowaHHS-2023.pdf>

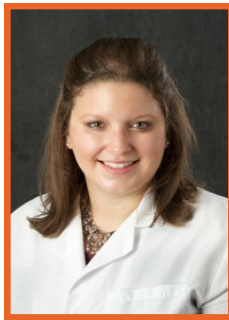
(State Coordinator: 515-954-6087)



1st Five Medical Consultants

Elizabeth Cramer, M.D.

Clinical Assistant Professor
Department of Family Medicine
University of Iowa



Meredith Fishbane-Gordon, M.D.

Clinical Associate Professor
Department of Pediatrics
University of Iowa Stead Family Children's Hospital



1st Five Healthy Mental Development Initiative

The 1st Five Healthy Mental Development Initiative model encourages primary care providers to incorporate standardized surveillance and developmental screening tools into their well-child visits following the American Academy of Pediatrics-endorsed Bright Futures periodicity schedule.

You play a unique role in early identification and treatment of developmental issues.

You can identify your patients with or at risk for developmental delay early by integrating standardized tools routinely into your practice.

Surveillance- Use standardized surveillance:

- ◆ For every child birth to five years
- ◆ At every well-child visit



Developmental Screening- Use a standardized developmental screening tool at:

- ◆ 9 months
- ◆ 18 months
- ◆ 30 months

